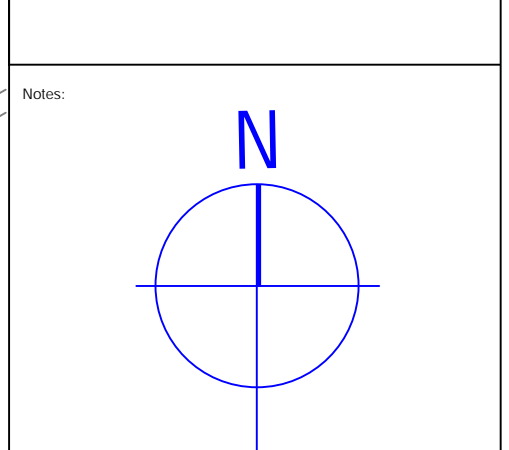
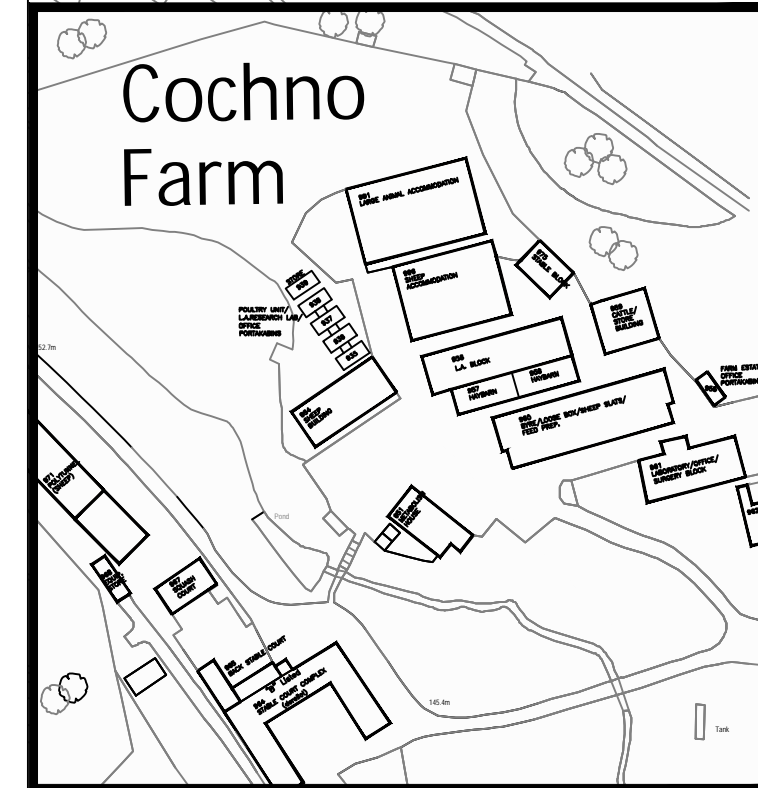


This drawing is the property of the UNIVERSITY OF GLASGOW and must not be reproduced without permission from the UNIVERSITY COLLEGE. THE CONTRACTOR must check all dimensions before commencing the work or stop drawings and any discrepancies brought to the attention of the DIRECTOR OF ESTATES.



LEGEND:
 University Owned
 Scottish Enterprise/ 'Speyroc' own the buildings, University owns land

- 600 Pavilion Caretaker's House
- 602 1st Floor (DEMOISHED)
- 601 Home Farm Building 1
- 603 Gardener's House
- 604 Awnings 1-New
- 605 CR UK Store
- 607 Greenhouses-2 DEMOLISHED
- 609 Awnings 2-New
- 610 Garage-2 DEMOLISHED
- 612 Wolfson Building (former Beaton Inst.)
- 615 Wolfson Wolfson Cancer Research Centre (TRC)
- 616 CR UK ESU
- 617 CR UK Building
- 618 Farm Store DEMOLISHED
- 619 Greenhouse
- 620 Stables Greenhouse-2 DEMOLISHED
- 621 Home Farm Building 2
- 622 Animal Control Accommodation DEMOLISHED
- 623 Isolation Unit
- 624 John Paul Suite DEMOLISHED
- 625 Squash Courts DEMOLISHED
- 626 James Neil Pavilion (Tennis Club)
- 628 Farm Store (West 632)
- 630 North Lodge
- 632 Abstar Currier Building
- 634 Main Gatehouse (Garscube)
- 636 Small Animal Hospital
- 700 Estates Clerk of Works Office Area (Old Security Office)
- 701 Indoor Riding Arena (Exercise Unit)
- 702 Campsite Building (Food Farm (Recreatory) - DEMOLISHED)
- 703 Large Animal Ops Theatre - DEMOLISHED
- 704 Stables Building (Administration Block) - DEMOLISHED
- 705 Clinical Isolation Unit (Large Animal Accommodation/Surgery) - DEMOLISHED
- 707 Forthbank Vet School - REMOVED
- 708 Weipers Equine Centre
- 709 Weipers Stable Block 1
- 710 McCall Building (Vet Hospital Building)
- 711 South Lodge
- 712 The Byre - Scottish Centre for Production Animal Health & Food Safety (SCFPAHS) (Food Animal Teaching)
- 713 Garscube Central Stores (Recreatory Facility) - DEMOLISHED
- 714 Mary Stewart Building (GLAS)
- 715 Scottish Centre for Production Animal Health & Food Safety (SCFPAHS) (Food Animal Teaching Block)
- 716 Reception Unit - DEMOLISHED
- 717 Ian Botham Building
- 718 Jarrett Building (Pre-Paracetamol Building)
- 719 Henry Wallace Institute of Comparative Medicine
- 720 St Michael Stoker (CVR) Bldg
- 721 Welcome Surgical Inst. 1
- 722 Weipers Stable Block 2
- 724 Urnart Building (former Wellcome Institute of Parasitology)
- 725 M&F Facility MFL 2, INP
- 729 McRobert Wing (Pre-Paracetamol)
- 730 Old Equine Unit - DEMOLISHED
- 731 Farm Store
- 732 Estates & Buildings Office/Workshop
- 734 Stables - DEMOLISHED
- 735 Pony Stable - DEMOLISHED
- 736 Vet Pharmacology - DEMOLISHED
- 737 Animal Stable - DEMOLISHED
- 760 Northerton Farm-Horse Accommodation-sold Dec. 2001
- 761 Northerton Farm-Sheep Accommodation-sold Dec. 2001
- 762 Northerton Farm-Cattle Accommodation-sold Dec. 2001
- 770 Garscube Maintenance Building
- 771 Garscube Maintenance Building
- 799 Fleming Building
- 800 Wolfson Hall A Block
- 801 Wolfson Hall B Block
- 802 Wolfson Hall C Block
- 803 Wolfson Hall D Block
- 804 Wolfson Hall E Block
- 806 Kelvin Conference Centre
- 807 Kelvin Campus 1 - Now owned by Scottish Enterprise-03/2012
- 808 Kelvin Campus 2 - Now owned by Scottish Enterprise-03/2012
- 809 Kelvin Campus 3 - Now owned by Scottish Enterprise-03/2012
- 920 University of Glasgow Argyle Wind Tunnel
- 921 University of Glasgow (Dept of Astronomy)
- 922 Acre House - Sold Dec. 2005
- 923 Wind Tunnel Acre Road



University of Glasgow | Estates Directorate
 University Ave
 Glasgow
 G12 8QQ
 0141 339 8855/330 6000

JOB TITLE:
 Garscube & Cochno Farm Campus Map

Drawing Title:
 613/GC2/

Date: June 2020 Scale: 1:1250 at A0
 Drawn: Sheena Dickson Checked:

613/GC2/