

## Using a TrueCrypt Encrypted USB Flash Drive

If in any doubt about any part of this process, seek advice from your local IT support, or the IT Services Helpdesk.

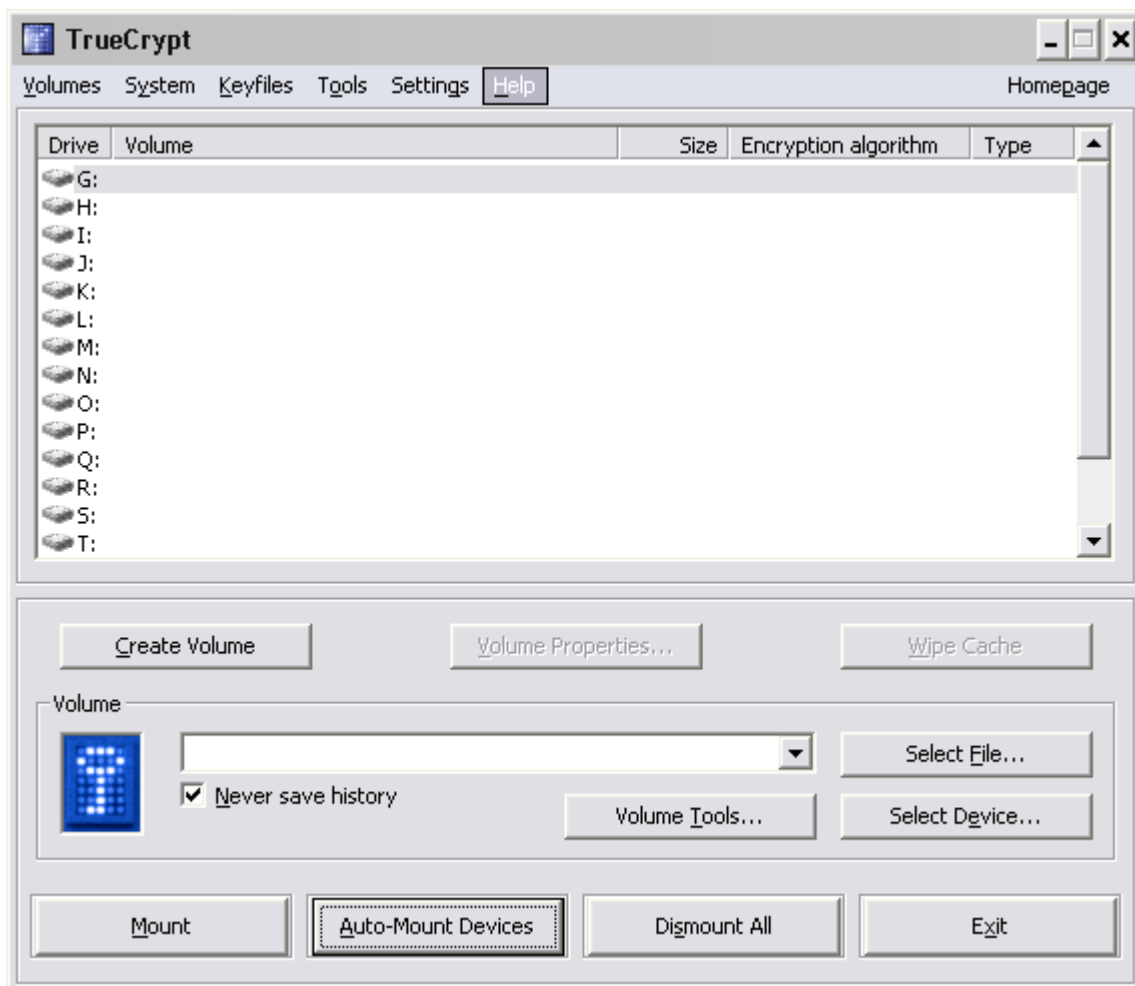
This guide describes the steps taken to use an encrypted USB flash drive.

### Step 1

Insert your USB flash drive. When you insert your USB flash drive you will notice that it will be assigned a drive letter and be shown in applications and Windows Explorer but you will not be able to access the drive, you must perform the following steps to use the encrypted drive.

### Step 2

Launch the TrueCrypt application. Select the drive letter you want your USB flash drive to be assigned, in this case G: and then click the Auto-Mount Devices button. You will only have to do this once each time you use the drive in a different system.



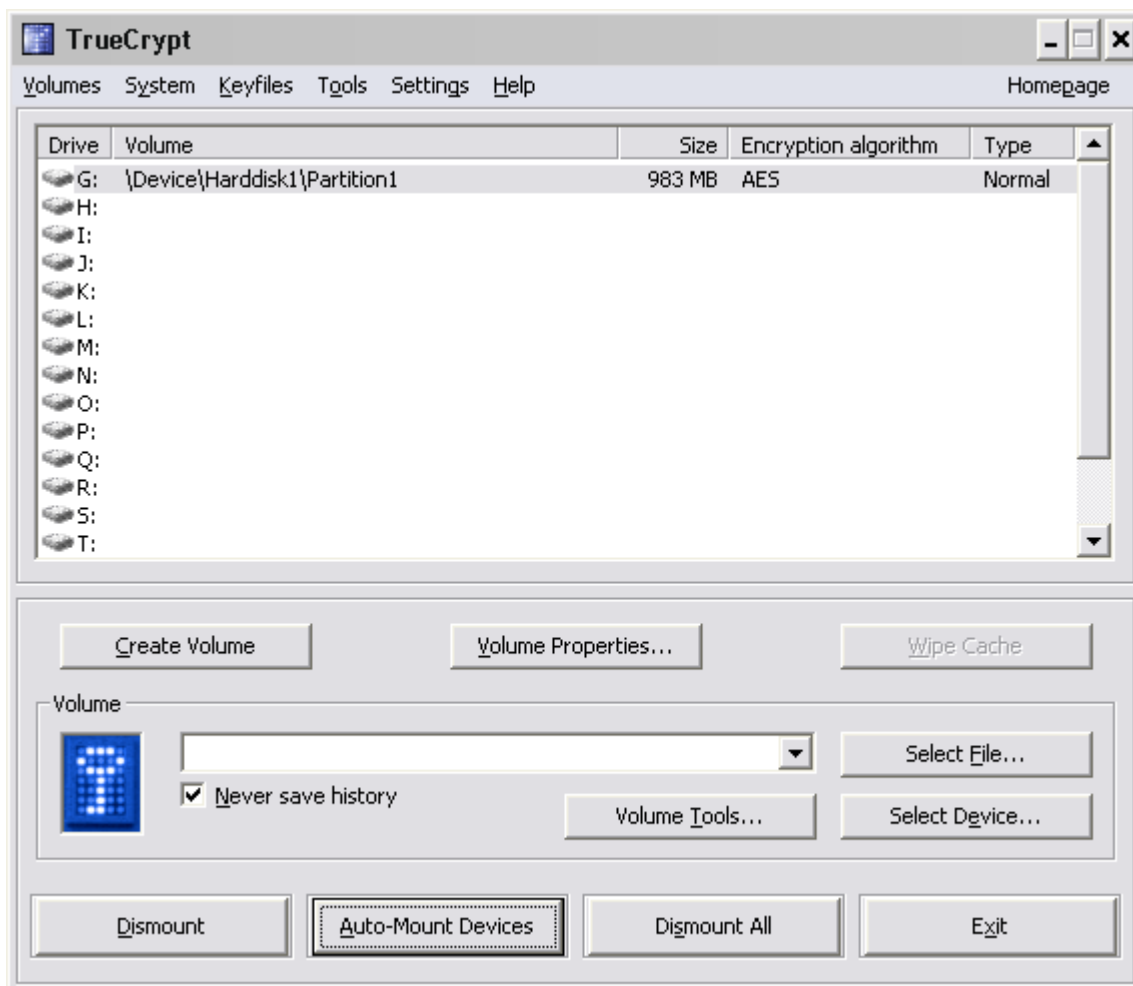
### Step 3

Type in the password then click OK.

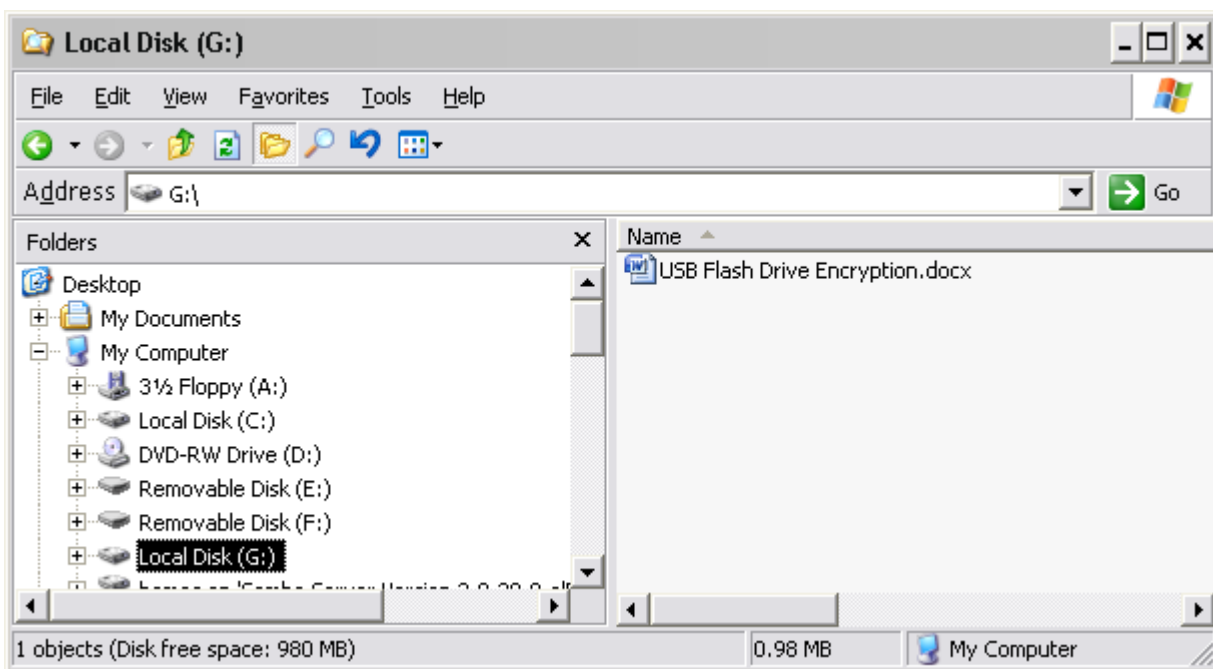
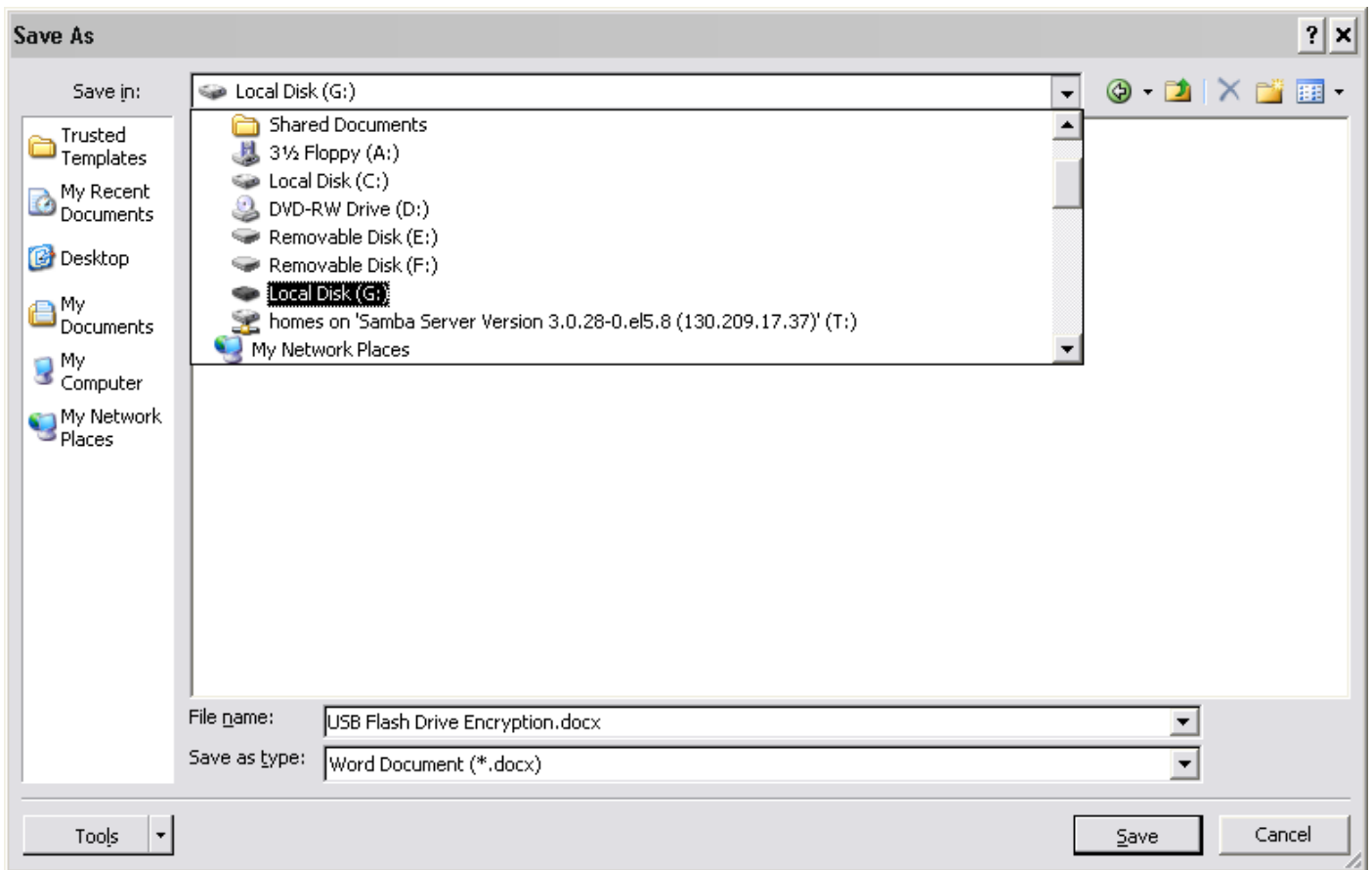


### Step 4

You will see that the USB flash drive has been made available on that drive letter.

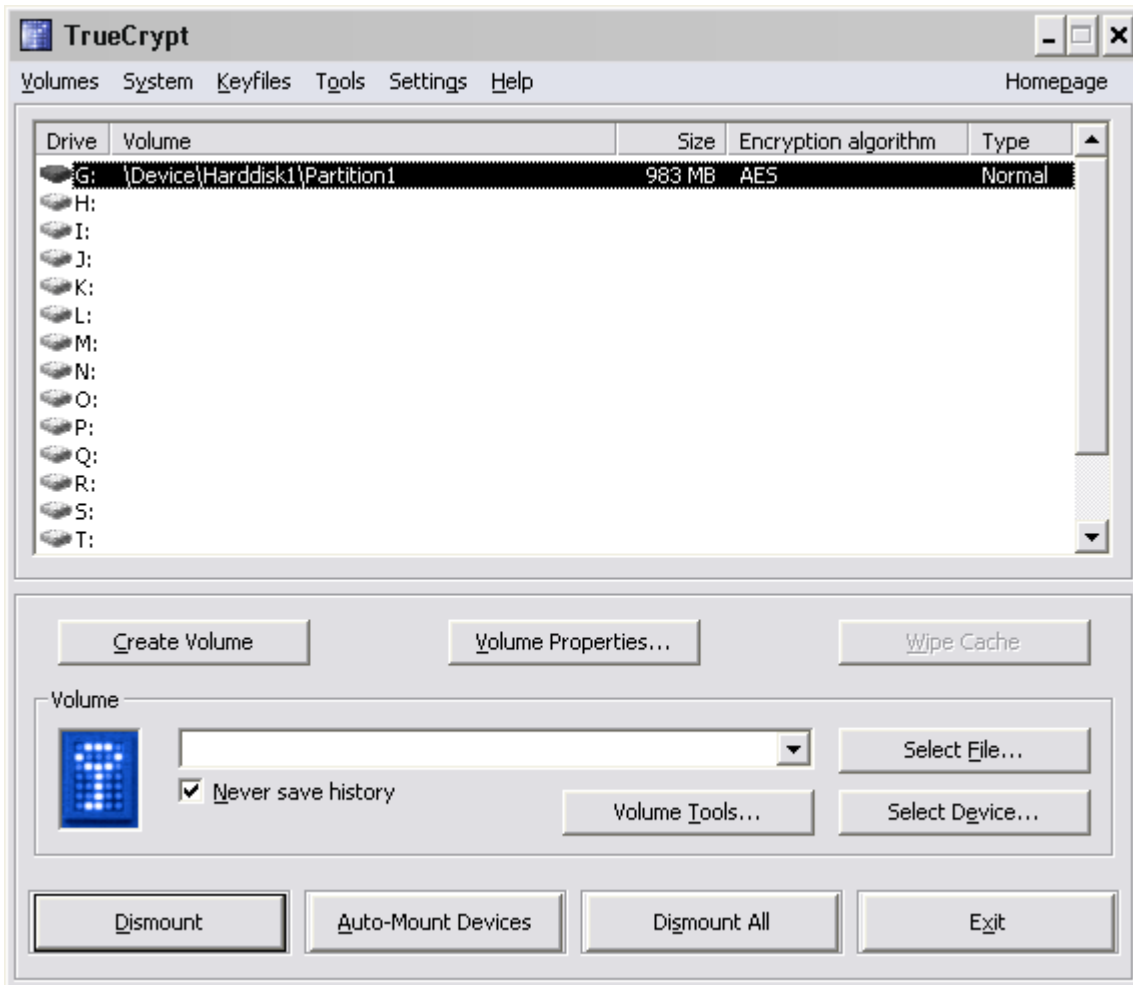


This can now be accessed via applications and also by Windows Explorer, like any normal drive.

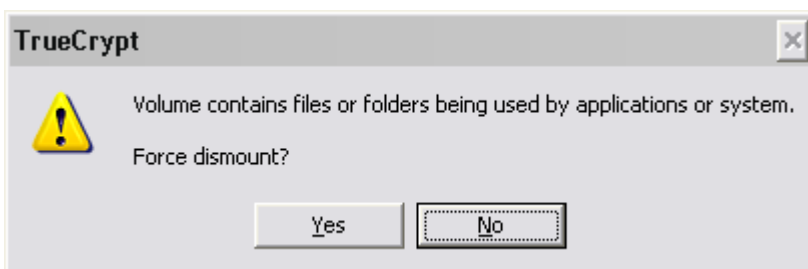


When you have finished using the USB flash drive you must first dismount the drive from TrueCrypt before removing it from the computer.

Select the drive that you wish to remove from the computer then click Dismount.



You may receive a warning if any of the data on the drive is being used by an application; this also includes browsing the contents via Windows Explorer. Close all open documents before dismounting and try again. Forcing a dismount may lead to corrupted data, depending on the application.



Remember that the drive is also mounted by the system and you will still have to remove the USB drive from the system in the usual way, i.e. via the system trays safely remove hardware icon.